



ATP Generation 3 SPECIAL EDITION NEWSLETTER

Welcome to the **third** and final edition of the **ATP Gen3 special edition** COVID-19 newsletter! In this edition we wanted to let you know what we found out about your children/s adjustment to **online learning** and how parents found balancing **childcare** and their **work commitments**.

COVID-19 Survey Update



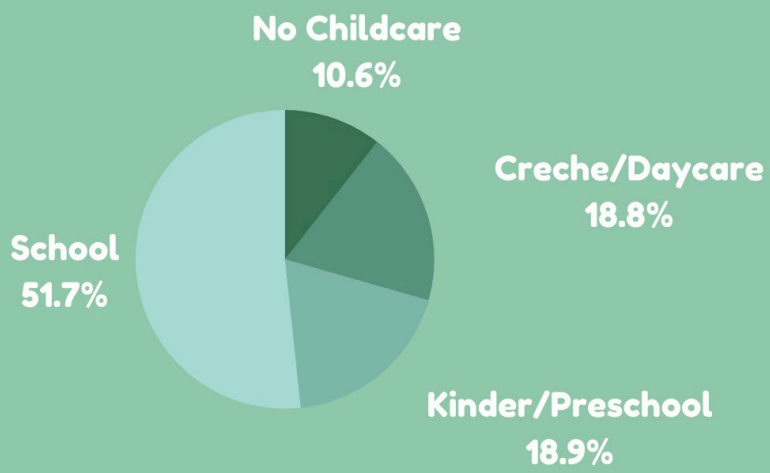
Thank you again to everyone who has taken part! **510 of 703 parents (73%)** in the ATP Gen3 study have completed the survey, which includes over **890 of the 1171 children** involved!

To make this as relevant as possible to assist with government planning around supporting families we would like to reach **80%**. This means we need **53 more parents** to take part.

The web survey takes about 10 minutes. You will receive a **\$25 e-gift card** and it can also be done over the phone. If you have not received the survey, please let us know ASAP at atp.nextgen@rch.org.au.

Here are Our Latest Findings about Childcare and Education across Lockdown

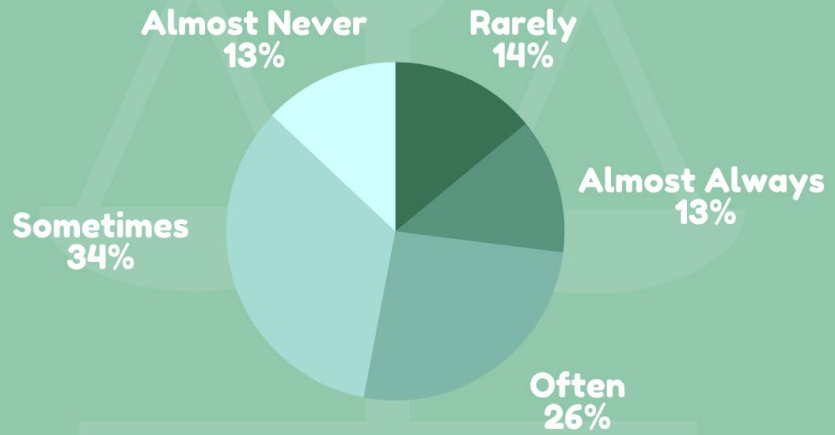
CHILD CARE/SCHOOL BEFORE LOCKDOWN



5 in 10 ATP Gen3 children were attending primary school before the pandemic. Almost 2 in 10 normally attended creche or daycare, 2 in 10 attended a kinder or preschool, and just 1 out of every 10 children did not usually attend a childcare facility.

DIFFICULTIES BALANCING WORKLOAD

How often has looking after your child made it difficult to do your paid work and/or domestic duties?



37%

Of parents found it difficult to balance childcare and work

These difficulties increased with the age of the child...

24%

with Creche/Daycare children

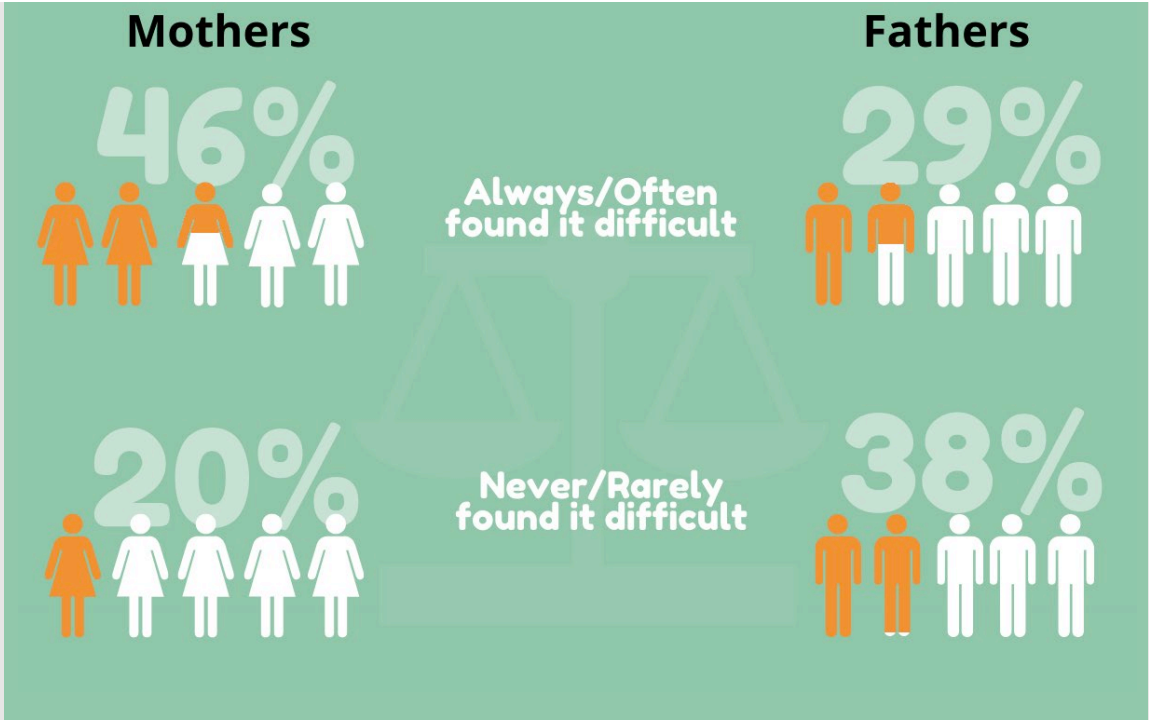
38%

with Kinder/Preschool children

46%

with Primary School children

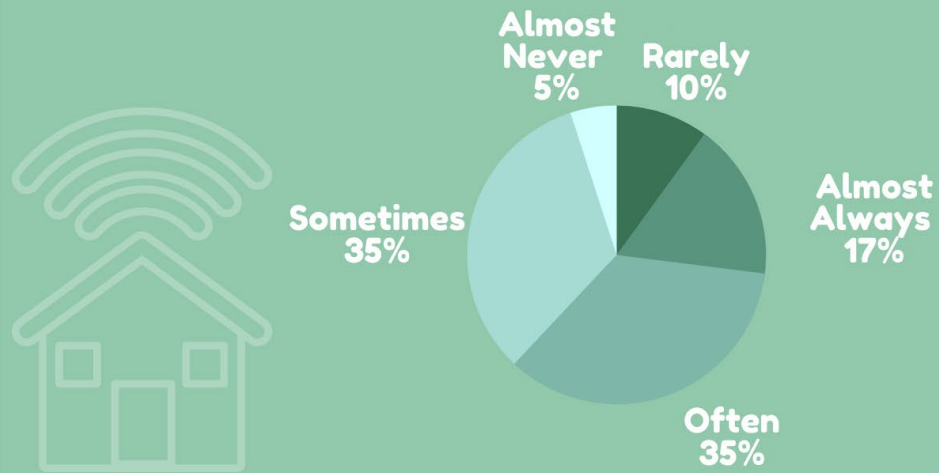
Over 1 in 3 parents reported difficulties balancing their workload (either paid work or domestic duties) with looking after their children during lockdown. These difficulties were more common with older children with **almost half** of parents of primary school children finding it difficult.



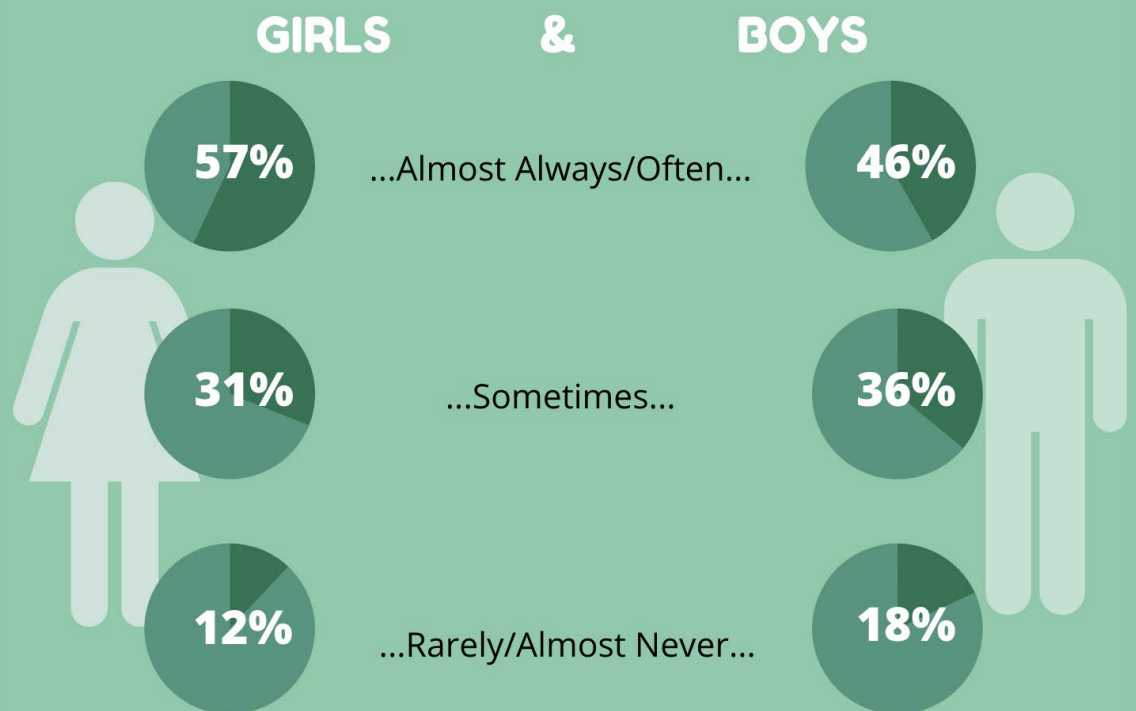
Almost half of mothers found it difficult to balance their usual work commitments with looking after children with during lockdown, compared to less than **1 in 3** fathers. Recent research indicates that mothers are disproportionately supporting children in the home during lockdown.

ONLINE LEARNING - PRIMARY SCHOOL

How much is your child enjoying and engaging with their online learning activities?



Enjoying and engaging with online learning activities:



Over half of your children enjoyed and engaged with their online learning activities. Girls appeared to adjust to online learning slightly better, with **57%** of girls reported to be engaging well compared to **46%** of boys. We developed some support sheets for primary-school aged children during COVID-19 which are available on our website:

[ATP Resources](#)

Thank you again to everyone who took part in the COVID-19 survey!



"A quick snap of some of the team from our online group meeting this week - the new normal for us! The participants and research keep us going and we truly appreciate your commitment to this amazing study. Thank you from all of us and we look forward to seeing you all again soon! We'd also like to welcome back Sophie who has been on maternity leave and thank Aisling for taking on the role of Project Manager in her absence, especially at this tumultuous time!!"

ATP Gen3 Research Team
 - Primrose, Aisling, Kate, Annette, Craig, Kit, Lucy, Sophie -

Keep in Touch!

Keep up to date with ATP news and events by following us on Facebook!



Facebook is a great place to link up with us to see the resources we post and new findings from the study. Go to: www.facebook.com/ATPGen3 Or via the handle [@ATPGen3](https://www.facebook.com/ATPGen3)

Each and every parent and child in the Gen3 study is vital and we could not do it without you! Please make sure your contact details are up to date so that we can stay in touch.

Phone: (03) 9345 4129

Web: www.melbournechildrens.com/atp

Email: atp.nextgen@rch.org.au

The ATP is a joint project between Deakin University, the Melbourne Children's (University of Melbourne, Murdoch Children's Research Institute and the Royal Children's Hospital) and the Australian Institute of Family Studies. Additional collaborators include the University of New South Wales and the University of Otago (New Zealand). The ATP has received financial support from many funding agencies and institutions over the years and is currently supported by grants from the National Health and Medical Research Council and the Australian Research Council.

